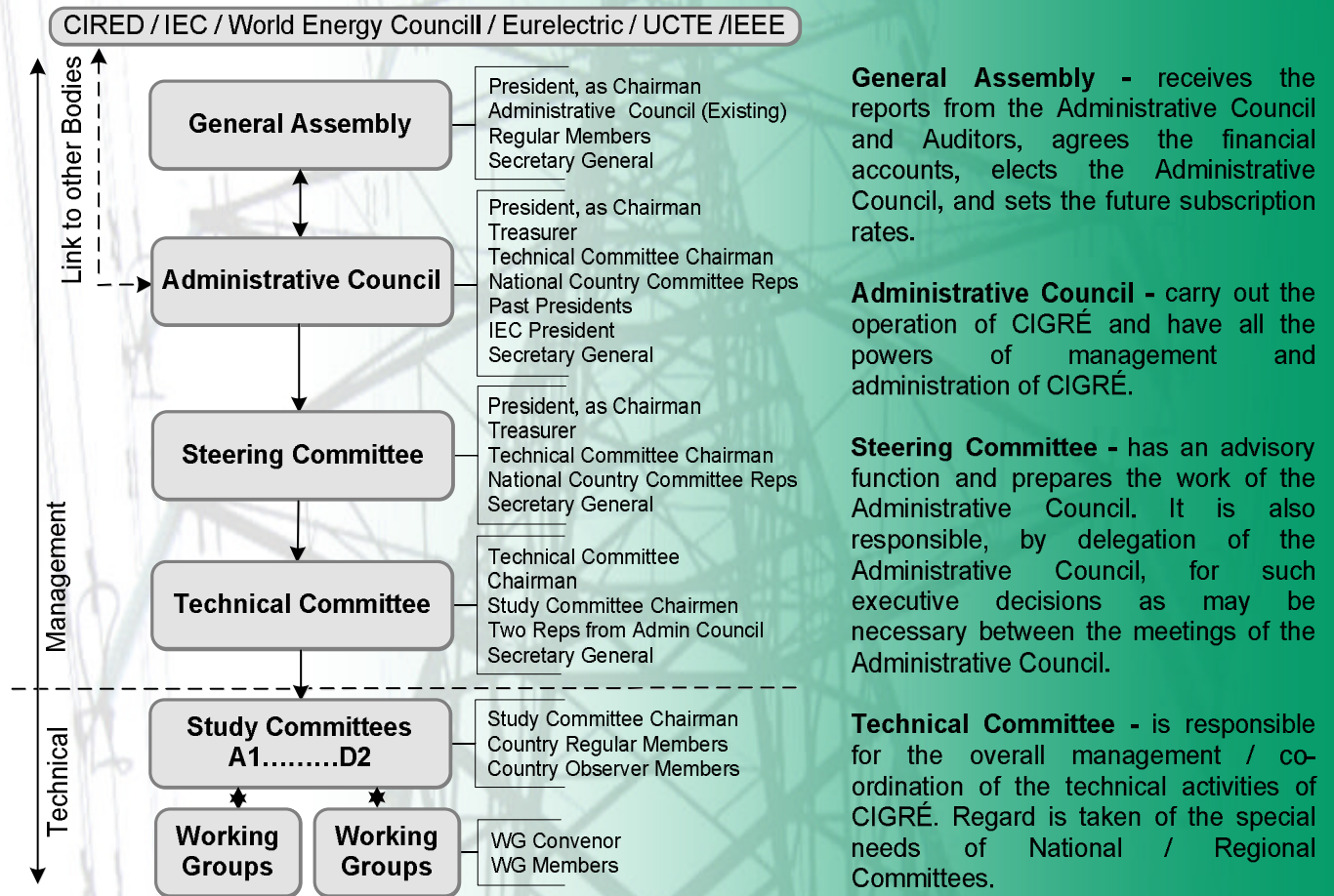


CIGRÉ has a worldwide presence in over 80 countries with 4200 individual members and 900 collective members, deriving its income from members' annual membership fees, from the proceeds of the Sessions and Symposia, and from sale of its publications.



**CIGRÉ-UK:** The only real difference in structure from the Main organisation and the UK organisation is the Executive Committee (responsible for managing the general activities of CIGRÉ-UK).

The members of the UK Technical Committee comprises all the UK Study Committee Regular Members.

Each UK Study Committee Regular Member must hold a UK Liaison meeting at least once a year and publishes a report of the activities in their Study Committee.

**Study Committees** - The Study Committees are responsible for the study of particular issues and subjects within their scope.

